

DCM Geometric Cut Odd Shape T-Shirts



#1 Basic T-Shirt w/ Moved Neck

Size 6

Lightweight Interlock Jersey

#2 Triangular/ Dolman T-Shirt

Size 6

Lightweight Interlock Jersey



#3 Asymmetric Cut T-Shirt

Size 6

Lightweight Interlock Jersey

DCM Geometric Odd Shape Dresses

Upside Down T Dress

Size 6,
Lightweight Interlock Jersey
Approx. 2 1/2 Yards

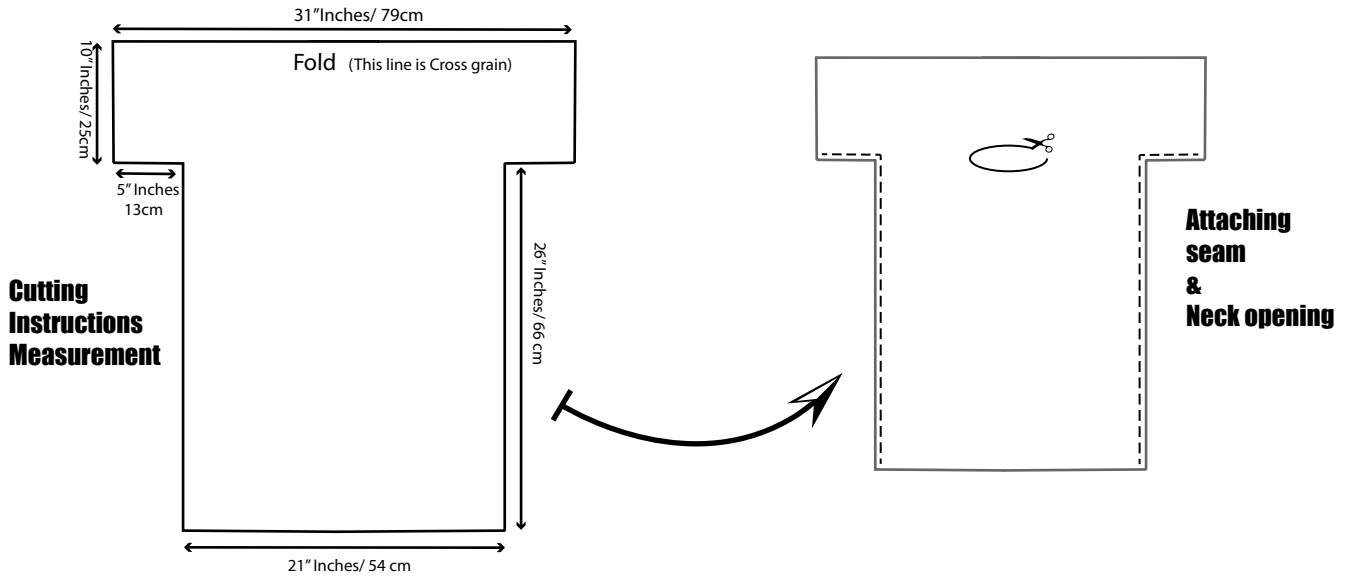


Curved Rectangular Dress

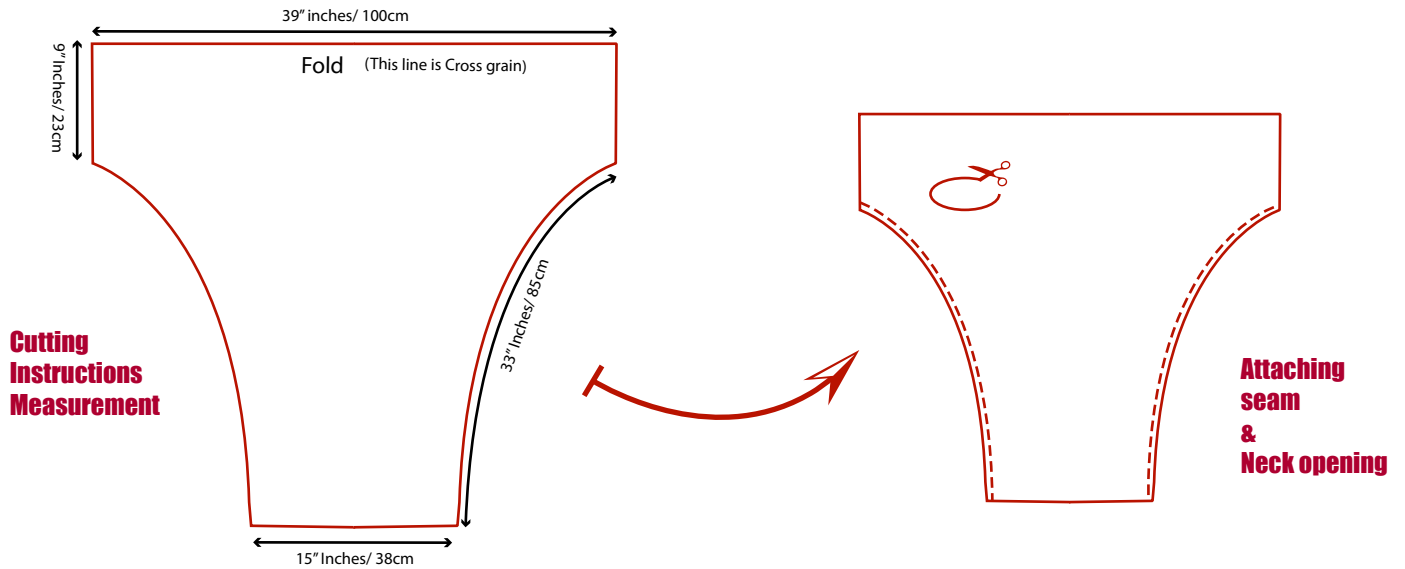
Size 6,
Lightweight Interlock Jersey
Approx. 2 1/2 yds

Geometric Cut, Odd Shape Teeshirts

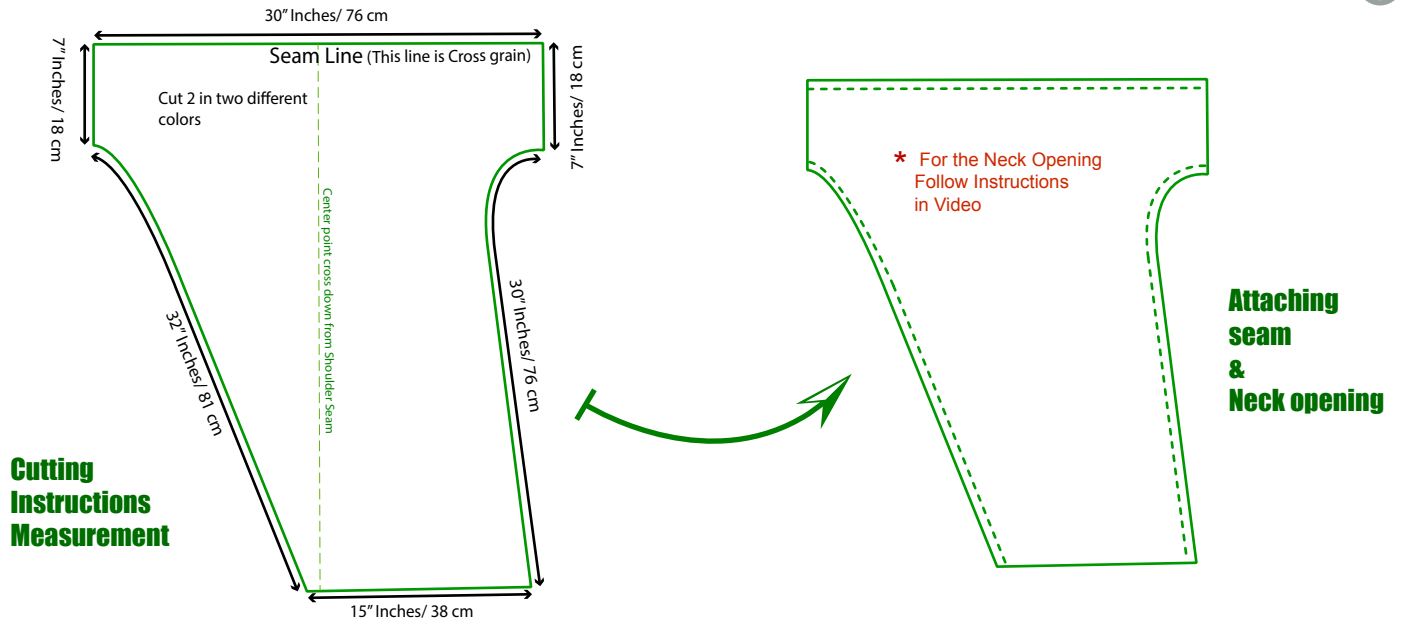
#1



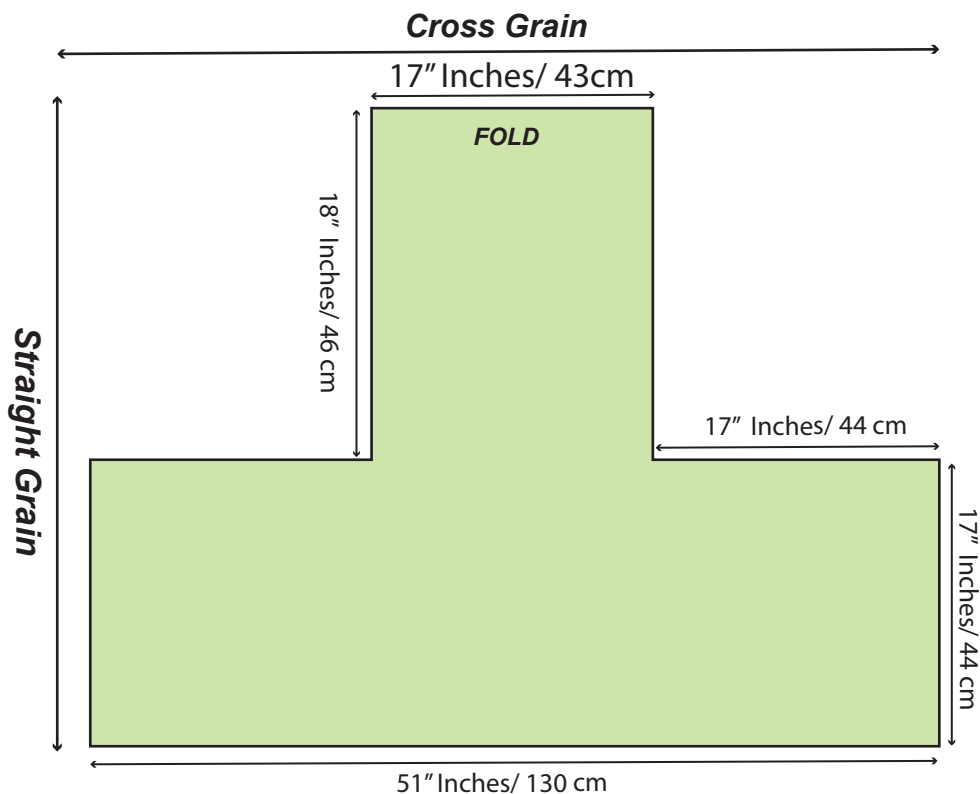
#2



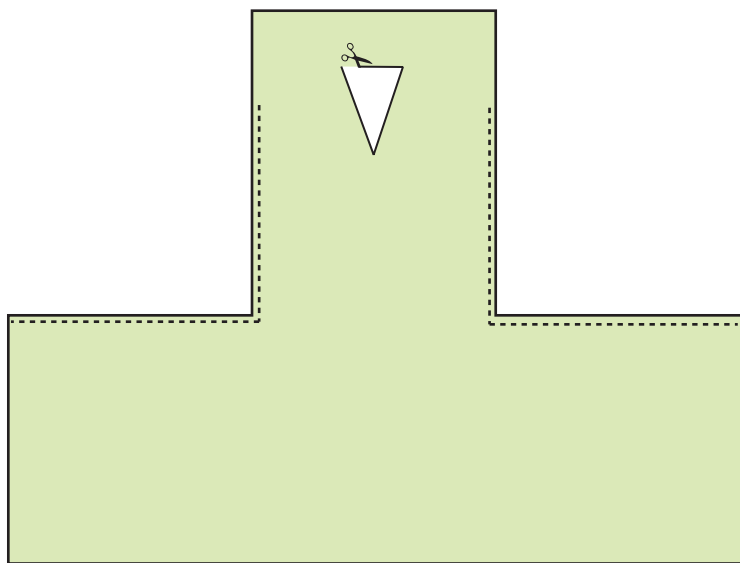
#3



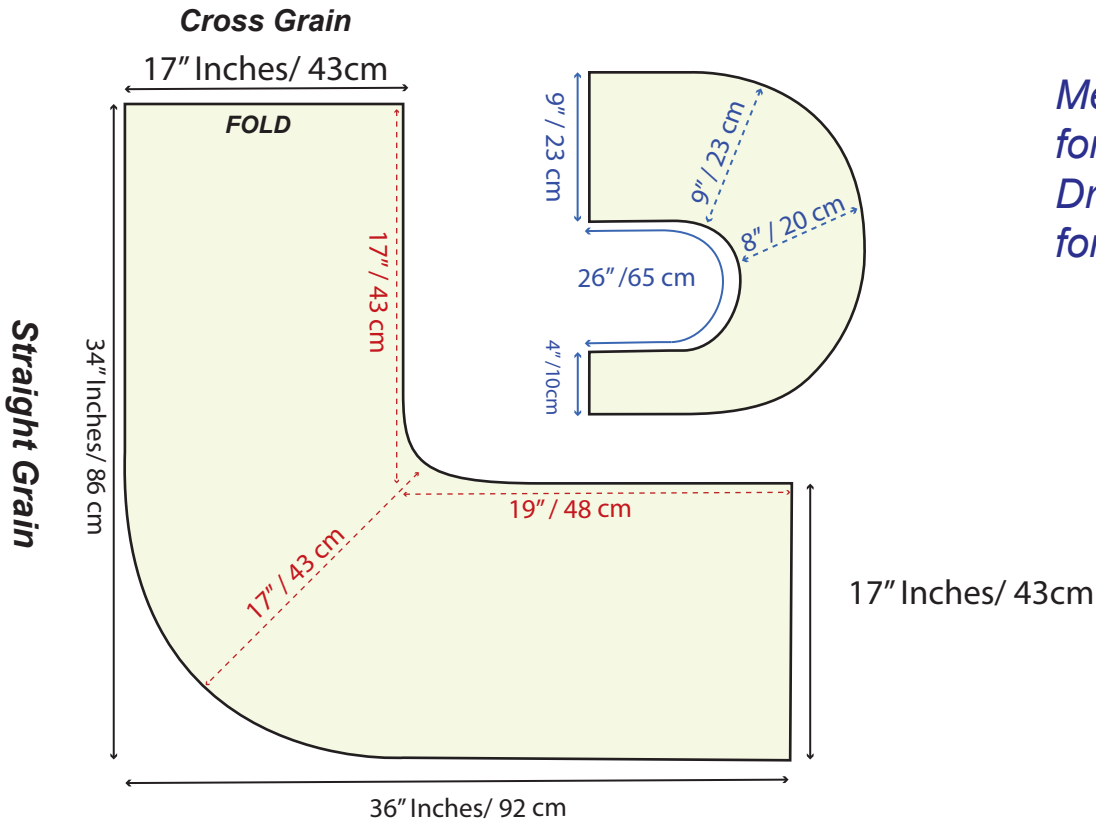
'Upside Down T Dress'



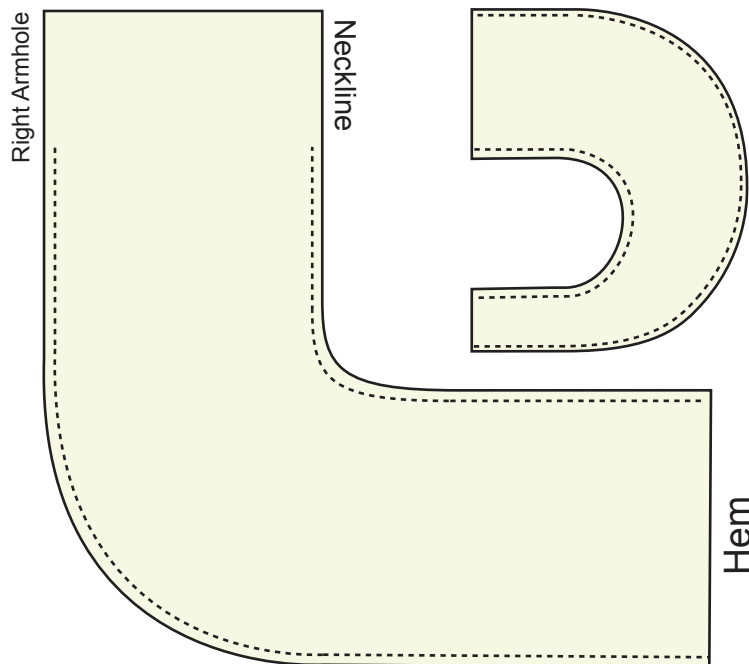
*Measurements
for cutting
Dress & Sleeve
for Size 6,8*



'Curved Rectangular Dress'



*Measurements
for cutting
Dress & Sleeve
for Size 6,8*



*Sewing, seams
and Neck opening
Instructions*

* To attach a sleeve, after fitting on your dress form, you need to open a hole for sleeve attachment. Follow the Demo on Video.

* You can taper the skirt hem if you like to have a more fitted look.



